



# IMPROVING GEF NATIONAL COORDINATION AND OUTREACH

**Agus Purnomo, Ministry of Environment, Indonesia**

GEF SubRegional Workshop for Focal Points  
Bangkok April 2 - 3, 2007

## Presentation Structure

- **Problem definitions**
- **Solution approaches**
- **Lessons learned**

## Problem definitions

### Problem definitions in 2005

- ✿ There has been a lack of absorbance capacity in Indonesia due to poor distribution of information about GEF requirements and difficulties to meet them, especially in mobilizing matching fund.
- ✿ The process to screen the proposals was long and cumbersome, also it has not been transparent.
- ✿ GEF-4 comes with RAF and will have a new set of rules of the game. National priorities / processes will drive the GEF-4 selection. Let's get ready.

## Solution approaches

- ✿ Identify stakeholders and consult them about GEF.
- ✿ Develop new criteria for national selection process.
- ✿ Develop new mechanism to increase transparency and ownership.

## Identification of stakeholders

- ✿ UNDP Jakarta organize a workshop among stakeholders to discuss GEF-4 in November 2005
- ✿ The GEF Constituency Meeting in December 2005 was the first opportunity to discuss GEF-4 with GEF Secretariat, attended by the stakeholders
- ✿ There are three groups of major stakeholders:
  - ✿ Government sector agencies: 18 agencies
  - ✿ NGOs and universities: two dozens
  - ✿ Implementing agencies: five agencies in Jakarta

## Identified stakeholders

- ✿ **Other government sector agencies:** Ministry of Foreign Affairs, Ministry of Home Affairs, Ministry of Finance, State Secretariat, Ministry of Energy and Mineral Resources, Ministry of Forest, Ministry of Transportation, National Development Planning Agency, Technology Research and Application Agency, Ministry of Public Works, Ministry of Marine and Fisheries Affairs, Ministry of Industry, Ministry of Agriculture, Ministry of Health, National Science Agency.

## Identified stakeholders

- ✿ **NGOs and universities:** ICHORD, IAARD, WWF, CTCR BIOTROP, RASI, Wetlands International, The Nature Conservancy, KEHATI, Conservation International, Bird Life, World Conservation Society, YBUL, WALHI, PELANGI, etc
- ✿ GEF Small Grants Programme
- ✿ GEF SGP PTF (UNDP)
- ✿ **Implementing Agencies:** UNDP, UNEP, ADB, World Bank and UNIDO. IFAD (for wetland proposal)

## New criteria for national selection

- ✦ **General Criteria:**
  - ✦ Source of co-financing is preferably not a new loan
  - ✦ Implementation of national priorities
  - ✦ Implementation of ratified conventions
  - ✦ Activities should promote sustainability
  - ✦ Positive impacts for national and global environmental
  - ✦ Preferably implemented by or involving multi-parties
  - ✦ Contributing to data collection and management
- ✦ **Specific Criteria is developed through detail budget allocations for specific issues**

## National specific priorities

Biodiversity Specific Priorities	RAF		
	US\$ (million)	50%RAF *150%	(%)
Protected Area (Doubling + Better, enabling, Monitoring and Evaluating)	10.43	7.82	25
Timber certification/ tracking/over-fishing/Species Extinction Avoidance	7.36	5.52	20
Capacity Building, Education, Public Awareness (CEPA)	5.52	4.14	15
Marine/coastal conservation	5.52	4.14	15
Agrobiodiversity (sustainable use)	5.52	4.14	15
Others	3.68	2.76	10
<b>TOTAL</b>	<b>41.70</b>	<b>28.52</b>	<b>100</b>

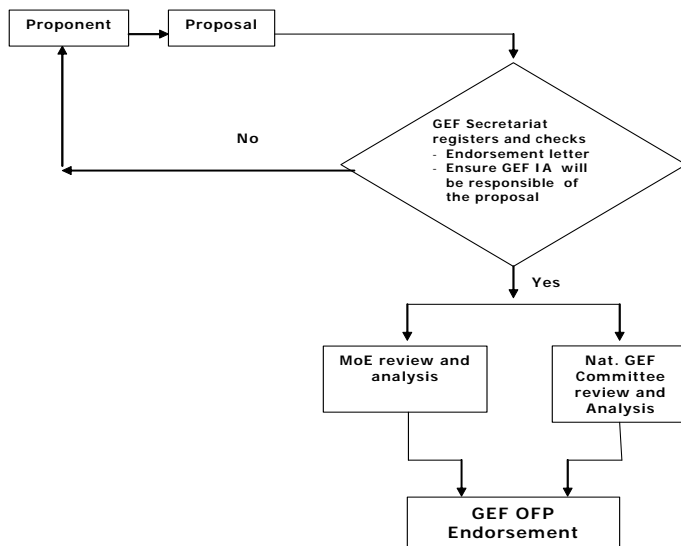
## National specific priorities

Climate Change Specific Priorities	Resources Allocation Framework		
	RAF		
	US\$ (million)	50%RAF *150%	(%)
Renewable Energy / New Energy (geothermal, wind, solar)	5.15	3.86	35
Capacity building, Education, Public Awareness (CEPA)	2.94	2.21	20
Efficiency Energy	2.94	2.21	20
Non energy climate related project	2.21	1.65	15
Alternatif Fuel (bio fuel, clean coal, biogas, bio mass)	1.47	1.10	10
<b>TOTAL</b>	<b>14.70</b>	<b>11.03</b>	<b>100</b>

## Coordinating Implementing Agencies

- ✿ Coordinate GEF Implementing Agencies and collate their plans and targets in using GEF-4 funding, to know the amount of GEF-4 funding that each agencies is planning to channel.
- ✿ Encourage the government agency partners for each proposal to take more active roles and demonstrate ownership.
- ✿ Bring the peer pressure to 'equalize' the disparity of requested amounts in the submitted proposals.

## National Procedure for Submit GEF Proposal



## Lessons learned



- ☀ 15 stakeholders meetings were organized in 2006.
- ☀ We generated high interest as well as good proposals out of the consultative meetings

## Results and achievements

- ✿ A list of endorsed proposals has been submitted to the GEF CEO on September 15, 2006.
- ✿ Total amount of proposals for Climate Change is USD11.78 millions or 140% of allocated budget
- ✿ Total amount of proposals for Biodiversity is USD31.58 millions or 150% of allocated budget
- ✿ The stakeholders were excited and happy with the consultative process. They are aware that one of every three submitted proposals will not get the funding for Phase One.

## New problem definitions (2007)

- ✿ There has been a lack of allocated funds for the expressed interests and submitted proposals.
- ✿ Unclear directions, thinking and criteria at the GEF Secretariat (CEO)
- ✿ Democracy in decision which proposals to endorse does not yield the best result. There is a need to develop a decisive but transparent system of implementation of national priorities.

## Lessons learned & recommendations

- ✿ In transition period, improvement on criteria and refinement of directions require feedback mechanism that involve all key parties.
- ✿ There is a need to increase the effectiveness of communication with GEF Secretariat, especially with GEF CEO.
- ✿ Integrating small proposals into one big strategic (at national level) proposal is a possible solution to overcome budget limitation in Phase 2

Thank You